

Healthcare | BDO Corporate Finance

Private and voluntary nursing home Fair Deal Rates

Analysis of The National Treatment Purchase Fund
Agreed Private & Voluntary Nursing Home Fair
Deal Rate Changes in September 2024

Fair Deal Rate (FDR) Changes

September 2024

Introduction

Every month the HSE releases an update on the prevailing FDR for private & voluntary nursing homes operating under the Fair Deal Scheme across the country. This FDR represents the maximum price per week agreed between the nursing home and the HSE under the Nursing Home Support Scheme, providing an insight into not only the highest and lowest rates being achieved but also into the changes occurring on a monthly basis for each individual private and voluntary nursing home.

Nursing homes under the Fair Deal Scheme allow for residents to pay only a portion of their cost of care and the remaining is paid by the HSE to the nursing home.

For the past number of years, our Healthcare Team in Corporate Finance has analysed these changes, noting trends and patterns on a county-by-county basis and an all-country basis. We have now prepared this report to highlight the change in the rates between June 2024 and September 2024.

BDO's Healthcare Team provides the following Corporate Finance Services:

- Development financing and restructuring
- Financial due diligence
- Rescue, recovery & turnaround
- Mergers & acquisitions
- NTPF negotiations.

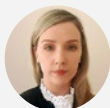
If you would like to seek advice on taking action from this report, BDO's Corporate Finance Healthcare team can assist you, contact us on **(061) 464 822** or email:



BRIAN MCENERY
Managing Partner
bmcenery@bdo.ie



STEPHEN O'FLAHERTY
Partner,
Corporate Finance
soflaherty@bdo.ie



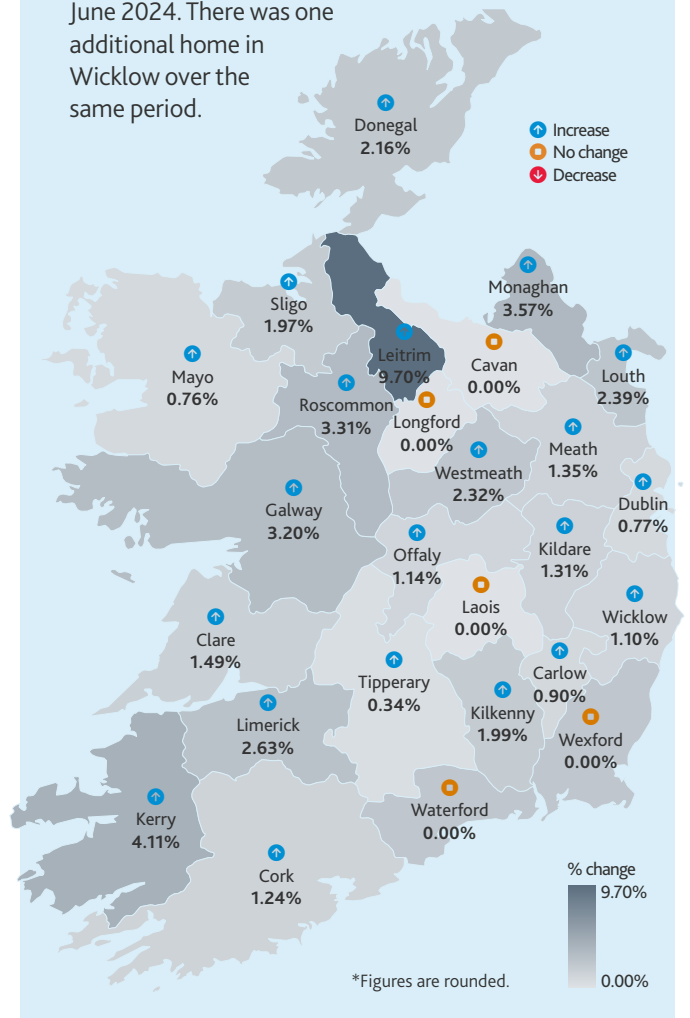
SHONAGH SHEAHAN
Senior Manager,
Corporate Finance
s sheahan@bdo.ie

NTPF weekly rates: Average quarterly % change* (September 2024/June 2024)

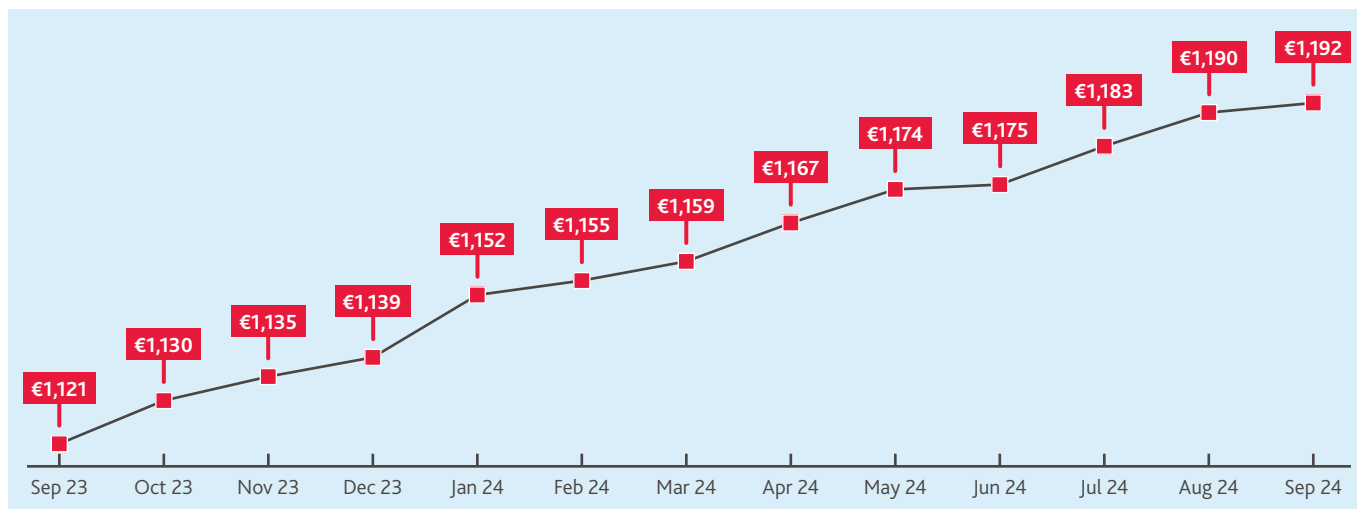
FDR comparison September 2024 vs June 2024

This map shows the quarterly average % change in agreed NTPF Fair Deal rates by county in September 2024 compared to the rates in June 2024 of voluntary and private nursing homes:

- The FDR changes are a result of successful negotiation between individual nursing homes and the NTPF to agree on a maximum price that the nursing home charges under the Nursing Home Support Scheme on a weekly basis.
- The country average weekly rate has increased by 1.46% from €1,175 in June 2024 to €1,192 in September 2024.
- 21 counties showed an increase in the weekly average NTPF Fair Deal rates in September compared to June with the highest rate increase of 9.7% in Leitrim, where the average rate increased from €1,041 to €1,142. The lowest recorded increase of 0.34% was in Tipperary where the average weekly rate increased from €1,112 in June to €1,116 in September.
- Five counties showed no change in average rates compared to June 2024 Fair Deal weekly rates.
- There was one less home in Dublin, two less homes in Galway, and one less home in Meath under the scheme in September 2024 compared to June 2024. There was one additional home in Wicklow over the same period.



Last 12 months country average weekly FDR increases for Private & Voluntary Nursing Homes in Ireland



NTPF Agreed Weekly Fair Deal Rates*

COUNTY	JUN '24	SEP '24		% CHANGE	SEP '23	NO. OF NURSING HOMES UNDER FDR SCHEME			
						JUN '24	SEP '24	CHANGE	
Carlow	1,110	1,120	↑	0.90%	1,071	5	5	0	0
Cavan	1,152	1,152	○	0.00%	1,080	7	7	0	0
Clare	1,104	1,121	↑	1.49%	1,036	12	12	0	0
Cork	1,168	1,183	↑	1.24%	1,107	48	48	0	0
Donegal	1,095	1,119	↑	2.16%	1,036	13	13	0	0
Dublin	1,316	1,327	↑	0.77%	1,280	88	87	↓	-1
Galway	1,094	1,129	↑	3.20%	1,047	32	30	↓	-2
Kerry	1,072	1,116	↑	4.11%	1,030	16	16	0	0
Kildare	1,220	1,236	↑	1.31%	1,165	20	20	0	0
Kilkenny	1,136	1,158	↑	1.99%	1,061	9	9	0	0
Laois	1,170	1,170	○	0.00%	1,104	5	5	0	0
Leitrim	1,041	1,142	↑	9.70%	1,041	2	2	0	0
Limerick	1,101	1,130	↑	2.63%	1,050	20	20	0	0
Longford	1,154	1,154	○	0.00%	1,054	3	3	0	0
Louth	1,164	1,192	↑	2.39%	1,127	9	9	0	0
Mayo	1,118	1,127	↑	0.76%	1,043	17	17	0	0
Meath	1,186	1,202	↑	1.35%	1,124	19	18	↓	-1
Monaghan	1,141	1,182	↑	3.57%	1,074	4	4	0	0
Offaly	1,127	1,140	↑	1.14%	1,050	5	5	0	0
Roscommon	1,091	1,127	↑	3.31%	1,046	8	8	0	0
Sligo	1,186	1,209	↑	1.97%	1,138	6	6	0	0
Tipperary	1,112	1,116	↑	0.34%	1,025	24	24	0	0
Waterford	1,160	1,160	○	0.00%	1,099	8	8	0	0
Westmeath	1,078	1,103	↑	2.32%	1,020	8	8	0	0
Wexford	1,120	1,120	○	0.00%	1,058	13	13	0	0
Wicklow	1,221	1,235	↑	1.10%	1,169	18	19	↑	1
COUNTRY AVERAGE	1,175	1,192	↑	1.46%	1,121	419	416	↓	-3

*Figures are rounded, Country average rates provided includes all private & voluntary nursing homes under the Fair Deal Scheme

FOR MORE INFORMATION:

CALL

061 464 822

or email:

BRIAN MCENERY

bmcenery@bdo.ie

STEPHEN O'FLAHERTY

soflaherty@bdo.ie

SHONAGH SHEAHAN

ssheahan@bdo.ie

This publication has been carefully prepared, but it has been written in general terms and should be seen as containing broad statements only. This publication should not be used or relied upon to cover specific situations and you should not act, or refrain from acting, upon the information contained in this publication without obtaining specific professional advice. Please contact BDO to discuss these matters in the context of your particular circumstances. BDO, its partners, employees and agents do not accept or assume any responsibility or duty of care in respect of any use of or reliance on this publication, and will deny any liability for any loss arising from any action taken or not taken or decision made by anyone in reliance on this publication or any part of it. Any use of this publication or reliance on it for any purpose or in any context is therefore at your own risk, without any right of recourse against [member firm name] or any of its partners, employees or agents.

BDO is authorised by the Institute of Chartered Accountants in Ireland to carry on investment business. BDO, a partnership established under Irish Law, is a member of BDO International Limited, a UK company limited by guarantee, and forms part of the international BDO network of independent member firms.

BDO is the brand name for the BDO network and for each of the BDO Member Firms.

Copyright © September 2024 BDO Ireland. All rights reserved. Published in Ireland.

www.bdo.ie

SOURCE OF INFORMATION

Health Service Executive(HSE):

<https://www2.hse.ie/services/fair-deal-scheme/about-the-fair-deal-scheme.html>