

Healthcare | BDO Corporate Finance

Private and voluntary nursing home Fair Deal Rates

Analysis of The National Treatment Purchase
Fund Agreed Private & Voluntary Nursing
Home Fair Deal Rate Changes in June 2024

Fair Deal Rate (FDR) Changes

June 2024

Introduction

Every month the HSE releases an update on the prevailing FDR for private & voluntary nursing homes operating under the Fair Deal Scheme across the country. This FDR represents the maximum price per week agreed between the nursing home and the HSE under the Nursing Home Support Scheme, providing an insight into not only the highest and lowest rates being achieved but also into the changes occurring on a monthly basis for each individual private & voluntary nursing home.

Nursing homes under the Fair Deal Scheme allow for residents to pay only a portion of their cost of care and the remaining is paid by the HSE to the nursing home.

For the past number of years, our Healthcare Team in Corporate Finance has analysed these changes, noting trends and patterns on a county-by-county basis and an all-country basis. We have now prepared this report to highlight the change in the rates between March 2024 and June 2024.

BDO's Healthcare Team provides the following Corporate Finance Services:

- Development financing and restructuring
- Financial due diligence
- Rescue, recovery & turnaround
- Mergers & acquisitions
- NTPF negotiations.

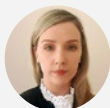
If you would like to seek advice on taking action from this report, BDO's Corporate Finance Healthcare team can assist you, contact us on **(061) 464 822** or email:



BRIAN MCENERY
Managing Partner
bmcenery@bdo.ie



STEPHEN O'FLAHERTY
Partner,
Corporate Finance
soflaherty@bdo.ie



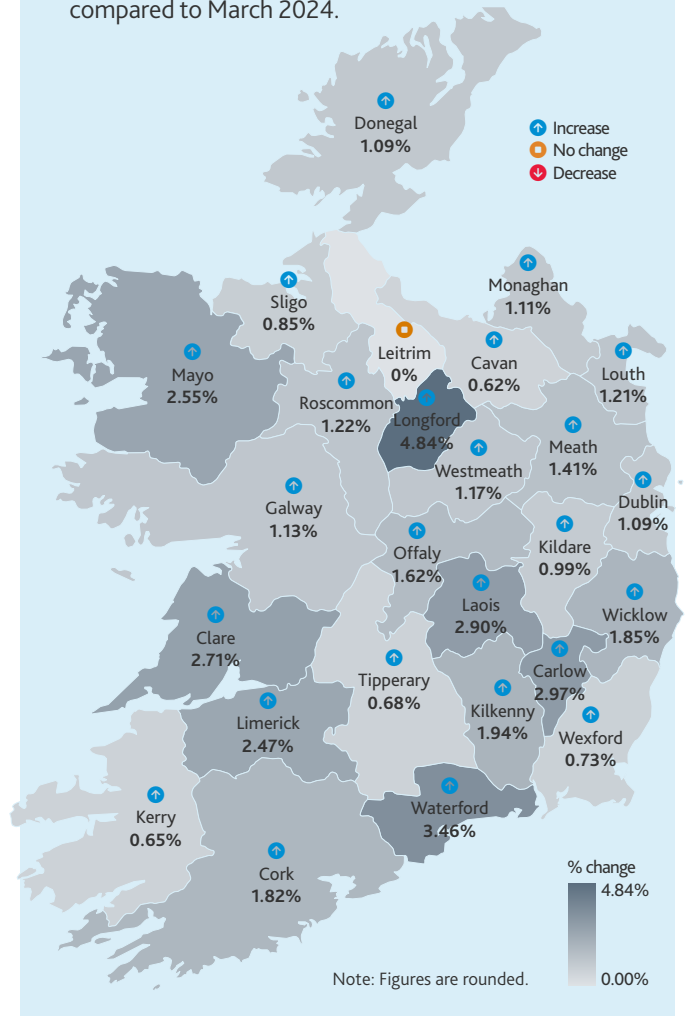
SHONAGH SHEAHAN
Senior Manager,
Corporate Finance
s sheahan@bdo.ie

NTPF weekly rates: Average quarterly % change (June 2024/March 2024)

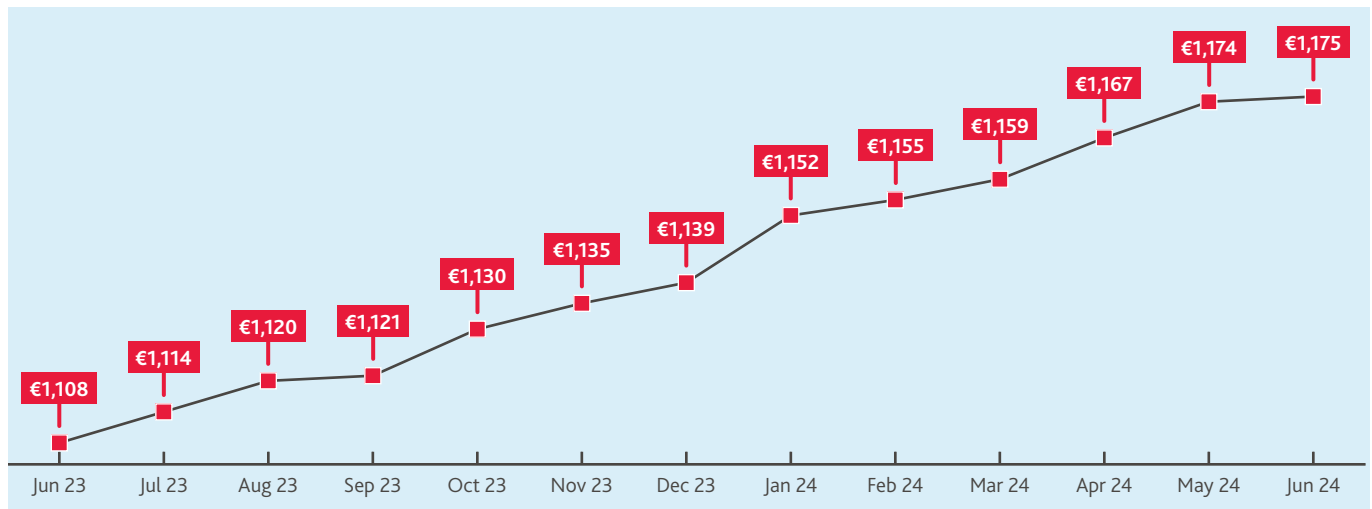
FDR comparison June 2024 vs March 2024

This map shows the quarterly average % change in agreed NTPF Fair Deal rates by county in June 2024 compared to the rates in March 2024 of voluntary and private nursing homes:

- The FDR changes are a result of successful negotiation between individual nursing homes and the NTPF to agree on a maximum price that the nursing home charges under the nursing home support scheme on a weekly basis.
- The country average weekly rate has increased by 1.43% from €1,159 in March 2024 to €1,175 in June 2024.
- 25 counties showed an increase in the weekly average NTPF Fair Deal rates in June compared to March with the highest rate increase of 4.84% in Longford, where the average rate increased from €1,101 to €1,154. The lowest recorded increase of 0.62% was in Cavan where the average weekly rate increased from €1,145 in March to €1,152 in June.
- One county showed no change in average rates compared to March 2024 Fair Deal weekly rates.
- There was one less home in Dublin and one additional home in Meath under the scheme in June 2024 compared to March 2024.



Last 12 months country average weekly FDR increases for Private & Voluntary Nursing Homes in Ireland



NTPF Agreed Weekly Fair Deal Rates*

COUNTY	MAR '24	JUN '24		% CHANGE	JUN '23	NO. OF NURSING HOMES UNDER FDR SCHEME			
						MAR '24	JUN '24	CHANGE	
Carlow	1,078	1,110	↑	2.97%	1,048	5	5	○	0
Cavan	1,145	1,152	↑	0.62%	1,066	7	7	○	0
Clare	1,075	1,104	↑	2.71%	1,014	12	12	○	0
Cork	1,148	1,168	↑	1.82%	1,100	48	48	○	0
Donegal	1,083	1,095	↑	1.09%	1,017	13	13	○	0
Dublin	1,302	1,316	↑	1.09%	1,270	89	88	↓	-1
Galway	1,082	1,094	↑	1.13%	1,027	32	32	○	0
Kerry	1,065	1,072	↑	0.65%	1,005	16	16	○	0
Kildare	1,208	1,220	↑	0.99%	1,150	20	20	○	0
Kilkenny	1,114	1,136	↑	1.94%	1,059	9	9	○	0
Laois	1,137	1,170	↑	2.90%	1,098	5	5	○	0
Leitrim	1,041	1,041	○	0.00%	1,041	2	2	○	0
Limerick	1,075	1,101	↑	2.47%	1,030	20	20	○	0
Longford	1,101	1,154	↑	4.84%	1,023	3	3	○	0
Louth	1,150	1,164	↑	1.21%	1,106	9	9	○	0
Mayo	1,090	1,118	↑	2.55%	1,034	17	17	○	0
Meath	1,170	1,186	↑	1.41%	1,120	18	19	↑	1
Monaghan	1,129	1,141	↑	1.11%	1,074	4	4	○	0
Offaly	1,109	1,127	↑	1.62%	1,034	5	5	○	0
Roscommon	1,078	1,091	↑	1.22%	1,012	8	8	○	0
Sligo	1,176	1,186	↑	0.85%	1,116	6	6	○	0
Tipperary	1,105	1,112	↑	0.68%	1,016	24	24	○	0
Waterford	1,121	1,160	↑	3.46%	1,099	8	8	○	0
Westmeath	1,065	1,078	↑	1.17%	1,011	8	8	○	0
Wexford	1,112	1,120	↑	0.73%	1,058	13	13	○	0
Wicklow	1,199	1,221	↑	1.85%	1,160	18	18	○	0
COUNTRY AVERAGE	1,159	1,175	↑	1.43%	1,108	419	419	○	0

*Figures are rounded, Country average rates provided includes all private & voluntary nursing homes under the Fair Deal Scheme

FOR MORE INFORMATION:

CALL

061 464 822

or email:

BRIAN MCENERY

bmcenery@bdo.ie

STEPHEN O'FLAHERTY

soflaherty@bdo.ie

SHONAGH SHEAHAN

ssheahan@bdo.ie

This publication has been carefully prepared, but it has been written in general terms and should be seen as containing broad statements only. This publication should not be used or relied upon to cover specific situations and you should not act, or refrain from acting, upon the information contained in this publication without obtaining specific professional advice. Please contact BDO to discuss these matters in the context of your particular circumstances. BDO, its partners, employees and agents do not accept or assume any responsibility or duty of care in respect of any use of or reliance on this publication, and will deny any liability for any loss arising from any action taken or not taken or decision made by anyone in reliance on this publication or any part of it. Any use of this publication or reliance on it for any purpose or in any context is therefore at your own risk, without any right of recourse against [member firm name] or any of its partners, employees or agents.

BDO is authorised by the Institute of Chartered Accountants in Ireland to carry on investment business. BDO, a partnership established under Irish Law, is a member of BDO International Limited, a UK company limited by guarantee, and forms part of the international BDO network of independent member firms.

BDO is the brand name for the BDO network and for each of the BDO Member Firms.

Copyright © August 2024 BDO Ireland. All rights reserved. Published in Ireland.

www.bdo.ie

SOURCE OF INFORMATION

Health Service Executive(HSE):

<https://www2.hse.ie/services/fair-deal-scheme/about-the-fair-deal-scheme.html>